

# The Power to Perform. Everywhere.

Flanders Electric is the leading provider of quality components with an unsurpassed reputation for excellence in systems and services for the mining industry.

Service centers and field offices are located in most major mining regions to provide true service and support for our customers

# Mine Comms



## FLANDERS ELECTRIC CORPORATE HEADQUARTERS

North Plant / South Plant Offices  
8101 Baumgart Road  
PO Box 23130  
Evansville, IN 47724  
**(812) 867-7421**

Engineering Division  
(812) 867-4014

NEMA Frame Shop  
Evansville, IN  
(812) 421-4300

## ARIZONA ADVANCED PRODUCTS GROUP

622 E. Center St.  
Pima, AZ 85543  
**(928) 485-0100**

Keyenta (928) 677-5026  
Mesa (480) 888-8343  
Tucson (520) 886-6425

## FLORIDA

Lakeland (863) 510-0555

## ILLINOIS

Marion (618) 993-2681

## TEXAS

Longview (903) 759-9439

## UTAH

Salt Lake (801) 622-2243

## WYOMING

Casper (307) 237-4098  
Gillette (307) 686-6011  
Sheridan (307) 672-0738

## INTERNATIONAL

Antofagasta, Chile  
Rabat, Morocco  
Mumbai, India  
Beijing, China  
Mackay, Australia  
Edmonton, Canada



## Proven Electrical Solutions Worldwide

Flanders Electric delivers engineering expertise and production prowess to industries worldwide. We provide AC and DC drive systems, Machine Automation, Data Collection, Control System Integration, Electric Motor Repair, Custom Motor Manufacturing and a vast array of field services.

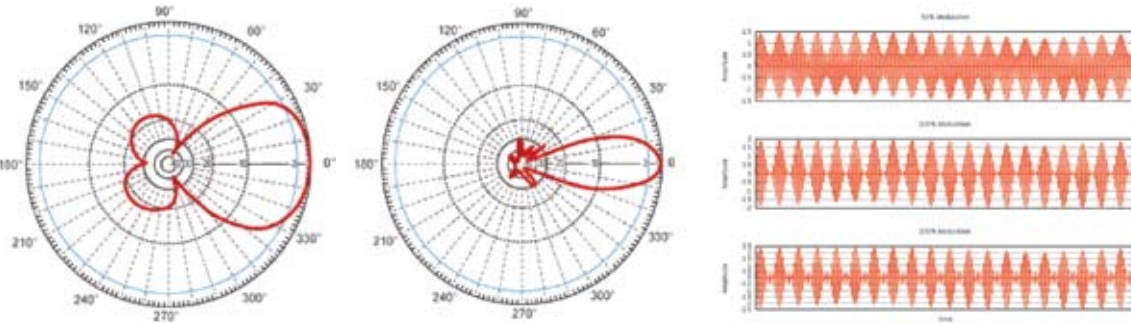
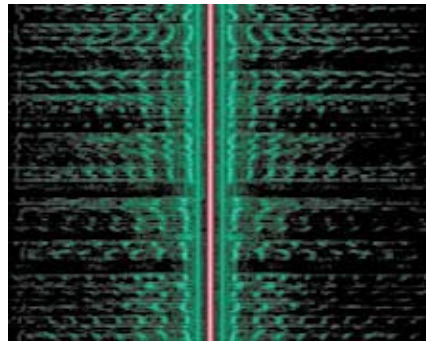


## Addressing the Challenges of Radio Networking in Mine Settings



# Mine Duty Radio Networks

Our Advanced Products Group provides radio network design to get the MOST out of your Flanders Electric Systems

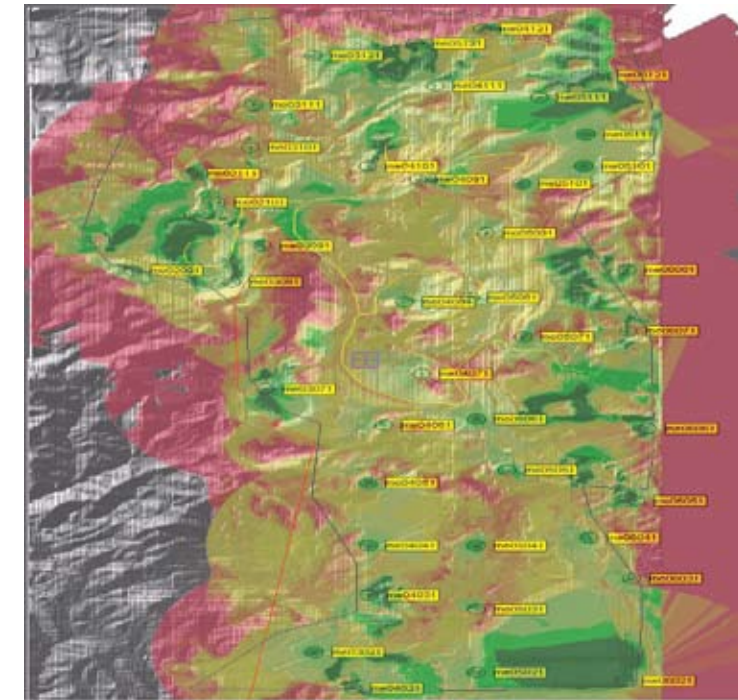


## RF Propagation

The challenges of Mine Radio Systems center around getting your signal out to where it does actual work for you. Limitations of signal paths, line of sight and reflectivity make mining a particularly difficult environment to deploy standard radio philosophy.

## Services

- Site Survey
  - Topography
  - Frequency Coordination
  - System Suitability
- FCC Compliance
- Licensing Assistance
- License Management
- System Compatibility
- Multi-System Arbitration



## Comprehensive Radio Networks for Mining

### MAINTENANCE

Minimal Labor Requirements



Systems are designed with minimal maintenance requirements in mind

- Self-Sufficient Power Systems
- Wide Range of Battery Selection
- Full Scope of Solar Solutions
- Fully Flexible Design Accommodations
- Integrated Remote System Monitoring

### EFFICIENCY

Maximize Data Availability



- Consolidate Field Data
- Network ALL Mobile Equipment
  - Trucks
  - Shovels
  - Dozers
  - Motor Graders
  - Support Machinery

### RELIABILITY

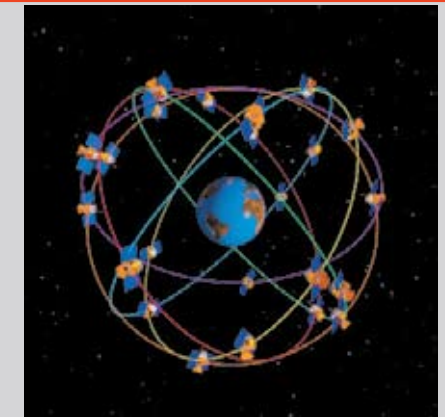
Proven in the Field



- Path Studies determine CORRECT Repeater Locations
- Built-in Redundancy Ensures Connectivity
- Throughput Analysis
- Real-World Testing to support Models
- Logo Agnostic Development
  - All Brands Accommodated
  - Best-Fit Solution for YOUR Site

### TASK-SPECIFIC

Networks That Enable Technology



Ensure Signal Integrity with Segregated Networking for Critical Data

- RTK
- E-Stop
- Critical Systems Monitors
- Site-Specific Conditions
- High Reliability
- Separated from General Network