

The Power to Perform. Everywhere.

With an unsurpassed reputation for excellence, Flanders Electric is the leading provider of quality components, systems, and services for the mining industry. Flanders service centers and field offices are located in most major mining regions to provide true service and support for our customers



FLANDERS ELECTRIC

CORPORATE HEADQUARTERS

North Plant / South Plant Offices
8101 Baumgart Road
PO Box 23130
Evansville, IN 47724
(812) 867-7421

Engineering Division
(812) 867-4014

NEMA Frame Shop
Evansville, IN
(812) 421-4300

ARIZONA

ADVANCED PRODUCTS GROUP

622 E. Center St.
Pima, AZ 85543
(928) 485-0100

Keyenta (928) 677-5026
Mesa (480) 888-8343
Tucson (520) 886-6425

FLORIDA

Lakeland (863) 510-0555

ILLINOIS

Marion (618) 993-2681

TEXAS

Longview (903) 759-9439

UTAH

Salt Lake (801) 622-2243

WYOMING

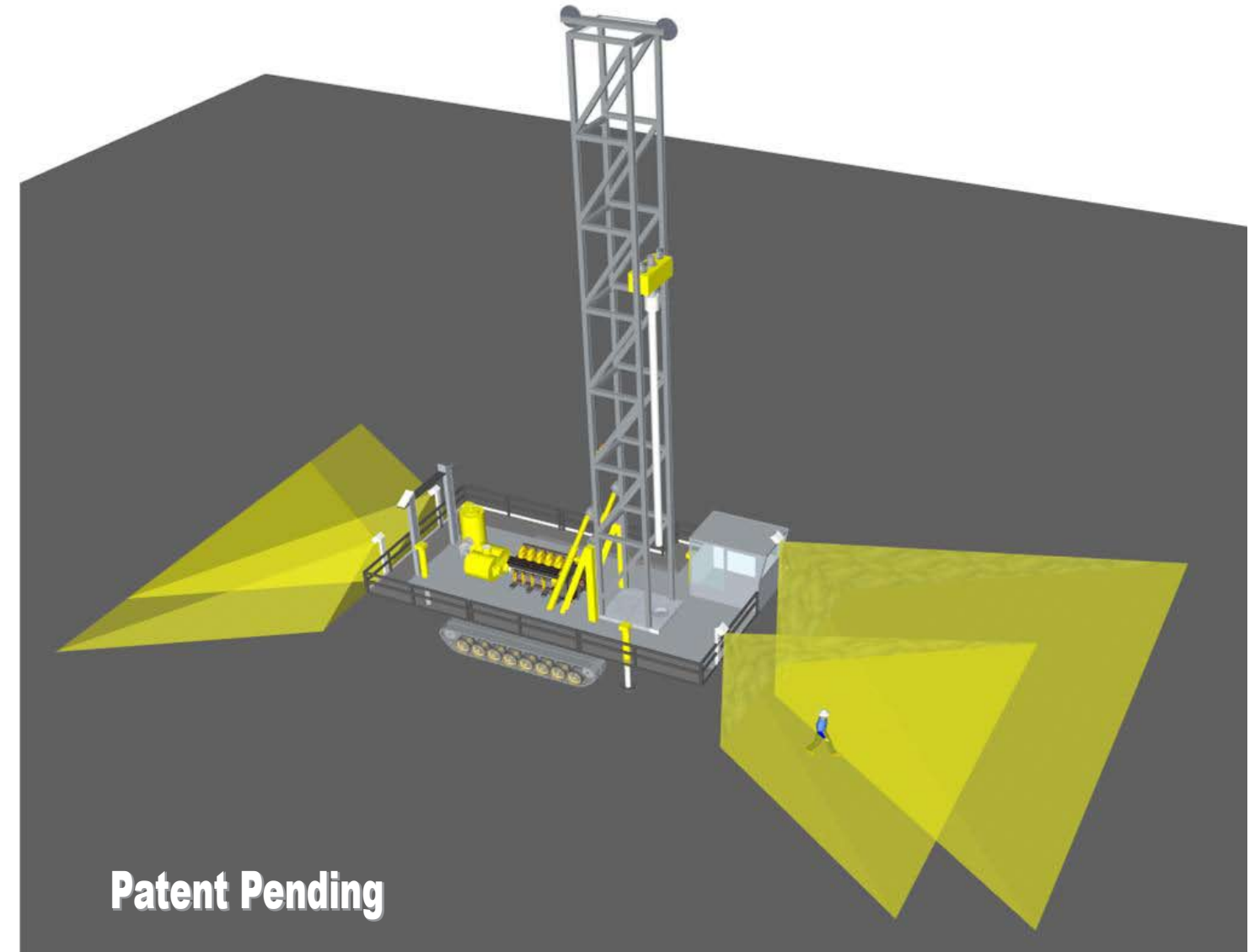
Casper (307) 237-4098
Gillette (307) 686-6011
Sheridan (307) 672-0738

INTERNATIONAL

Antofagasta, Chile
Rabat, Morocco
Mumbai, India
Beijing, China
Mackay, Australia
Edmonton, Canada

HazCam

Your World in 3-D!



Proven Electrical Solutions Worldwide

Flanders Electric delivers engineering expertise and production prowess to industries worldwide. We provide AC and DC drive systems, Machine Automation, Data Collection, Control System Integration, Electric Motor Repair, Custom Motor Manufacturing and a vast array of field services.



3-D Stereoscopic Imaging for Mining

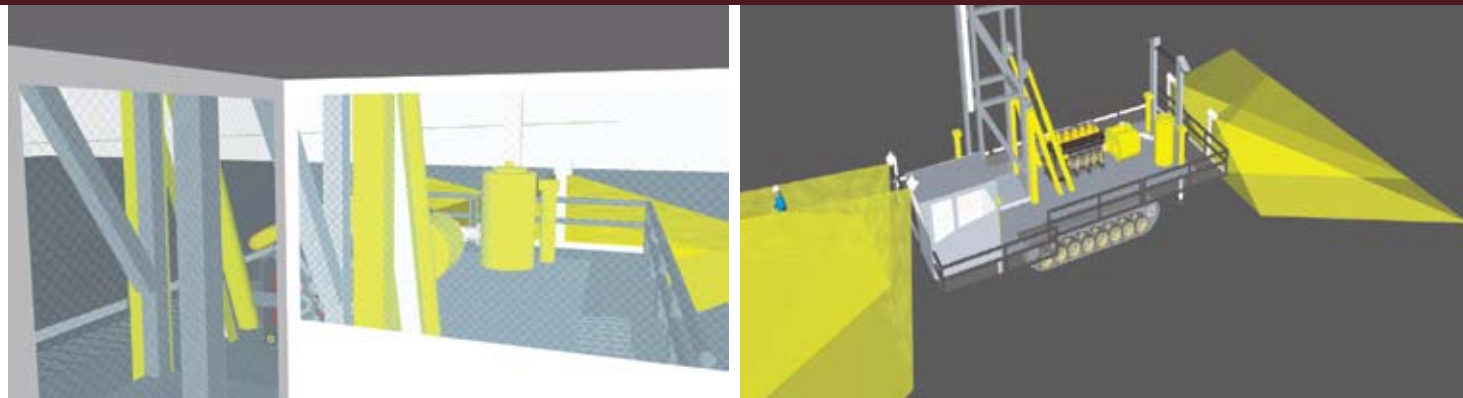
**HazCam Systems greatly improve safety by seeing the world around your machines.
Give your equipment the protective advantage they need to survive!**



Advanced Products Group

STEREOSCOPIC HAZARD DETECTION SYSTEM

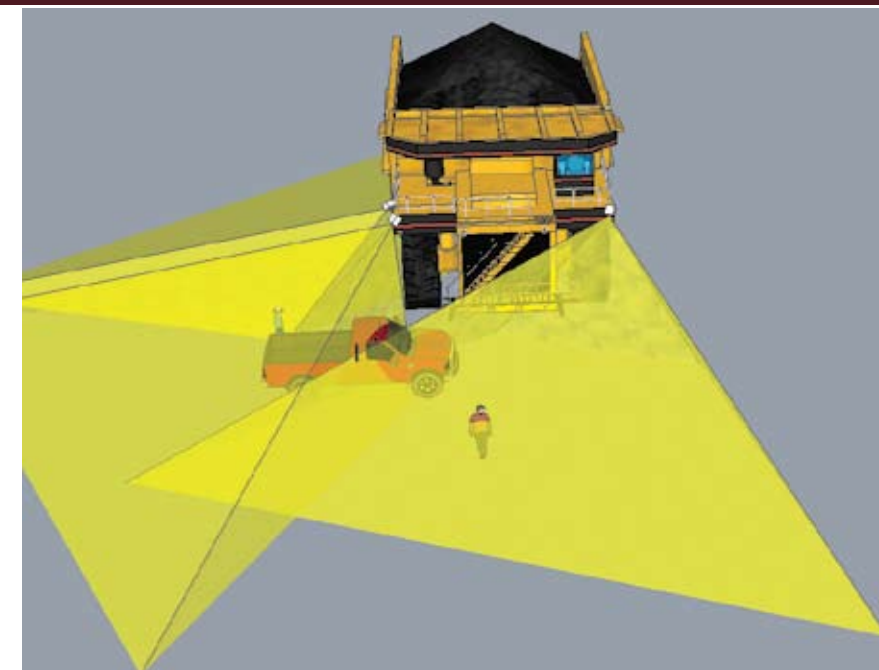
Senseless accidents happen. With the HazCam system developed by Flanders Electric's Advanced Products Group you can give your machines the senses they need to stop accidents before they happen.



Modern machines often hide obstacles due to the complex superstructure needed to enable the high production expected by today's mine operators. HazCam reveals those hidden obstacles on an easy to understand "map of the world" user interface that is integrated with the GPS map used on drills and trucks

HazCam

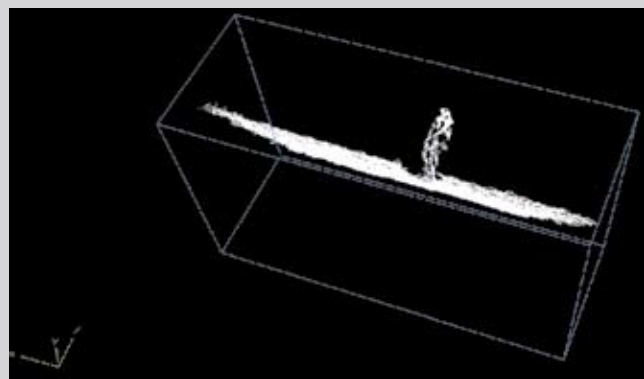
- Provides real time imaging of the surrounding area
- Simple to use and understand
- No moving parts
- High reliability
- Easily integrated



Stop Senseless Accidents in Their Tracks

3-D IMAGING

Provides Instant Ranging to Targets

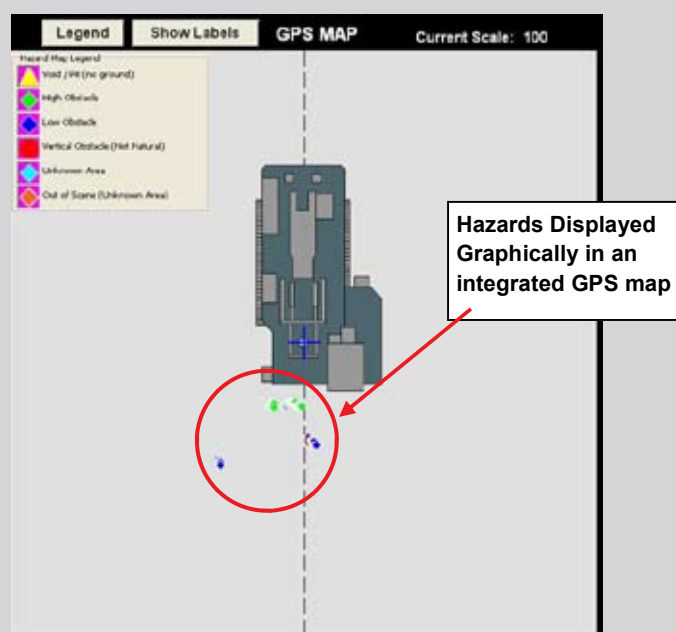


Accidents happen in the blink of an eye and cost mining operations millions of dollars every year. Photonic based stereoscopic imaging allows incredible update rates so decisions can be made in milliseconds.

- 30 Frame per second update rates
- Simple, easy to read display showing where the hazards are in real time
- Control system integration providing alarming or disabling of propel systems when hazards are in the vicinity

ACCURATE

3-D Ranging to 1 mm



- Instant range to objects accurate to within 1 mm
- Real world visual representation of obstacles in real time

RELIABLE

No Moving Parts



- Build to last in the harshest environments.
- Simple, forgiving calibration process
- Adaptable to most field equipment
- Mounting location flexibility

COMPREHENSION

Integration That Works



Digitized ranging data translates into 3-axis Hazard Maps

- Alarm(s) initiation
- Energy intervention
- Imaged field object analysis