

In This Issue:

Here We Grow Again....	Page 2
FE Onsite Clinic	Page 3
FE Electrical Engineer Seminar	Page 3
Announcements	Page 4

Training Schedule

2010 Flanders Training Schedule:

- **AUG 16-17** Flanders Electric, Evansville, IN
FL-03 Laws of Teamwork
- **AUG 16-19** PCS Phosphate; Aurora, NC
E-05A Enhanced Intermediate Dragline Controls
- **AUG 18-20** Flanders Electric, Evansville, IN
6RA70 Master DC Drive
- **AUG 19-20** Flanders Electric, Evansville, IN
FL-03 Laws of Teamwork
- **AUG 30-SEPT 2** NARM Minestie, Gillette, WY
E-02A DC Machines with Principles Review
- **SEPT 13-16** NARM Minestie, Gillette, WY
E-02A DC Machines with Principles Review
- **SEPT 20-24** Flanders Electric, Evansville, IN
Flanders Electric EE - Electrical Engineers Seminar
- **SEPT 22-24** Flanders, Evansville, IN
6SE70 Master AC Drive (CUVC)
- **OCT 12-15** Flanders, Evansville, IN
SIMATIC S7-300/400 PLC Programming I
- **OCT 20-21** Flanders, Evansville, IN
SIMATIC AC Drive

*To register, call Flanders Electric at 812-867-7421 and ask for training information or email feengineering@flanderselectric.com.



"Proudly Engineered, Built & Serviced in the USA"

FE Newsletter Questions or Comments?
Please contact:
Kelly Austin, Marketing Assistant
Engineering Division
kaustin@flanderselectric.com or
(812) 867-4014 ext. 3347

MCC Solutions

Is your equipment *long in the tooth*? Working when it wants to and not always when you need it to? Try a new MCC (Motor Control Center) from Flanders Electric. Our Custom Controls Shop is adept at customizing manufacturer's MCCs to meet your needs. For example, we can outfit "Brand X" MCCs with "Brand Y" VFDs, Softstarts, PLCs and more.

The photo below represents a custom configuration for one of our OEM customers. Their end user has standardized on Siemens MCCs and ABB VFDs. Flanders purchased the Siemens MCC with standard motor starters, feeder buckets and empty sections. Our Custom Control Shop integrated the VFDs into the empty sections and provided a common Profibus communication network throughout. The OEM was able to test and verify communications and operation at our facility prior to shipment to customer site.

Send us your simple or complex custom requirements and let us provide your economical **Power to Perform** solution.

Contact us today for your MCC needs - **812.867.7421**

Inside Cabinet View with Door Open



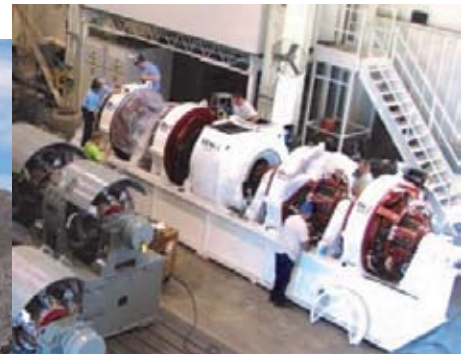
Inside Cabinet View with Door Open



MG Sets for Draglines

In addition to providing full scale repair and manufacturing services for draglines, Flanders designs and builds MG Sets in a variety of sizes and configurations to suit the specific needs of the dragline. Built the "Flanders Rugged Way", these MG Sets are advanced in the design and the use of materials and offer more power in the current footprints. Sync motor, generator sets, bearings, pedestals and our common unitary bases make up the complete unit shippable and swift to install. Dependable, rugged, reliable...it is the Flanders' way for the **Power to Perform**.

Dragline



MG Set for a Dragline

Here We *Grow* Again.....

Flanders Electric recognizes important challenges in serving our customers. We feel it is imperative to continually improve our effectiveness, expand our geographic and industry coverage of our core business solutions (i.e. repair, field services, exchange, custom upgrades and replacements). To better listen and serve our clients, modifications have been made to the current structure of Flanders divisions/units within the company. Our new corporate structure is designed to allow us to enhance our customer service and to expand our focus to include all worldwide installations of heavy duty electric rotating machines.

Flanders Electric is being realigned into three business units:

- **Aftermarket Business Unit:** *Our Mission:* to identify all existing installations of heavy duty electric motors and power systems in our range of expertise; then market, sell, and service solutions for those customers who require aftermarket help.
- **Power Systems Business Unit:** *Our Mission:* to listen to our clients needs, to design, build, market, and sell custom solutions for the Aftermarket business unit customers needing exchanges, upgrades or replacements of electric motors and complete power systems. To design, build, market and sell standard solutions in high volume for OEMs and large end-user customers needing new heavy duty electric machines and complete power systems for new installations or large scale retrofits.
- **Mining Systems Business Unit:** *Our Mission:* to identify all existing installations of surface mines and then design, market, and sell standard, high volume solutions for the automation and improved safety of surface mining operations.

Our united goal is to be regarded as the world's best supplier of:

- ◆ Aftermarket solutions for users of large and/or heavy duty electric motors and power & automation systems (i.e. repair, exchange, upgrade, or replace equipment in existing installations).
- ◆ Complete Power and Automation systems for new installations (i.e. motors, drives, controls, switchgear, specialty tools and mechanical systems; custom and standard systems).
- ◆ Decision support, control systems and safety enhancements for surface mining operations.

We see a new era of opportunity to provide greater value to our already loyal customers by interweaving these business units and bringing our expertise as close to our customers as possible. By bringing together these three business units and our service experience, we will better address the dynamic needs of our customers.

We have much to be thankful for in 2010 and while our workload will be challenging in 2011 and beyond, we will remain diligent that our accomplishments will be many!

On behalf of the Flanders Electric family, we would like to personally thank you, our valued customer, for your dedication and mutual commitment.

Sincerely,

Allen Patterson

Chief Operating Officer

Flanders Onsite Clinic

How exciting! Flanders Electric opened the new Onsite Clinic at the corporate facilities in Evansville, IN on April 26, 2010. Since the grand opening, the medical staff has been busy serving Flanders employees and their families. **As of this publication, the staff has seen over 300 visits at the FE Onsite Clinic.** Flanders Electric and the clinic staff are very excited and passionate about providing Flanders employees and their families with the most convenient and best medical care possible. Currently, the FE Onsite Clinic is available to all Indiana Flanders Electric employees and their dependents that are on the FE Medical Plan. The FE Onsite Clinic is open four days per week to accommodate the three work shifts of Flanders' Evansville employees.

Best of all, services provided at the FE Onsite Clinic are at NO COST TO THE EMPLOYEE!

Flanders Electric believes a healthy workforce has an increased sense of well-being, a greater satisfaction at home and work, a higher morale and is more responsive to the needs of our customers. The employees at Flanders Electric are our greatest asset! Flanders Electric is very proud to provide this benefit and service to our valuable employees!



Flanders Electric Onsite Clinic in Evansville, Indiana

FE Electrical Engineer Seminar

Flanders Electric Training Academy Presents: Five Day Electrical Engineer Training Seminar

DATES

September 20–24, 2010

LOCATION

Evansville, Indiana at Flanders Electric Headquarters
8101 Baumgart Road
Evansville, IN 47725
Training Room B

Seminar will be limited to 30 participants

REGISTRATION

To Register—Contact:

Jed Jensen, Flanders Electric Training Academy Director
1.307.689.0598 - jjensen@flanderselectric.com

Rick Scherer, Flanders Electric Training Academy Director
1.307.686.4106 - rscherer@flanderselectric.com

John Burant, Flanders Electric Technical Training Specialist
1.262.993.1202 - jburant@flanderselectric.com

The seminar will include the following topics and activities:

- Power Quality Considerations, IEEE 519
- New Motor Design, New Motor Manufacturing, Motor Repairs
- Synchronous Motor Controls and Protection
- Advanced Products for the Mining Industry
- Excavator Upgrades and Re-commissioning
- Ward Leonard Loop Control
- ISO Certification
- Babbitt and Thrust Bearings
- Electrical Testing: Equipment, Test Theory and Expected Results
- Safety at Flanders Electric
- Variable Frequency Drives
- Substation Design

*For those interested, topics will be presented as an option that will allow for renewal of your annual MSHA Electrical Requalification.

Visit us at:
www.flanderselectric.com



NONPROFIT ORG
US POSTAGE
PAID
Kwik Kopy
Business Center

Flanders Electric



8101 Baumgart Road
Evansville, IN 47725
Phone: 812-867-7421
Fax: 812-867-4190

Announcements.....

Come See Us...

- Aug 31 - Sept 1:** 2010 FMA Wind Energy Conference at Kirkwood Community College in Cedar Rapids, Iowa
- Sept 7 - 9:** 2010 MEMSA Trade Show in Clearwater, Florida
- Sept 14 - 15:** 2010 Oil Sands Tradeshow at Booth #2001 in Ft. McMurray, Alberta, Canada
- Oct 4 - 8:** 2010 Electra Mining Africa in Johannesburg, South Africa
- Oct 15:** 2010 Mining Indonesia in Jakarta, Indonesia

Customer Appreciation Award

Flanders Electric received the "2010 Platinum Customer Award" from one of our top suppliers for the second year in a row. Essex Brownell has been a supplier of electrical materials for Flanders corporate wide for over 45 years.



Congratulations First Quarter Safety Award Winners!

Congratulations to the following shops for meeting the First Quarter Safety Goals! They had zero recordable injuries and submitted at least the minimum number of near miss reports required for their locations. Thank you for your commitment to safety!



- ★ Maryland Street Shop
- ★ Illinois Shop
- ★ Florida Shop

www.flanderselectric.com

REPAIR ENGINEERING FIELD SERVICE PREDICTIVE MAINTENANCE CUSTOM MOTOR MANUFACTURING MOTOR SALES SYSTEM INTEGRATION

THE POWER TO PERFORM